

OKLAHOMA DEPARTMENT OF TRANSPORTATION					
FED. ROAD DIST. NO.	STATE	PROJ. NO.	FISCAL YEAR	SHEET NO.	TOTAL SHEETS
	OKLA.				
DESCRIPTION		REVISIONS	DATE		

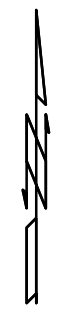
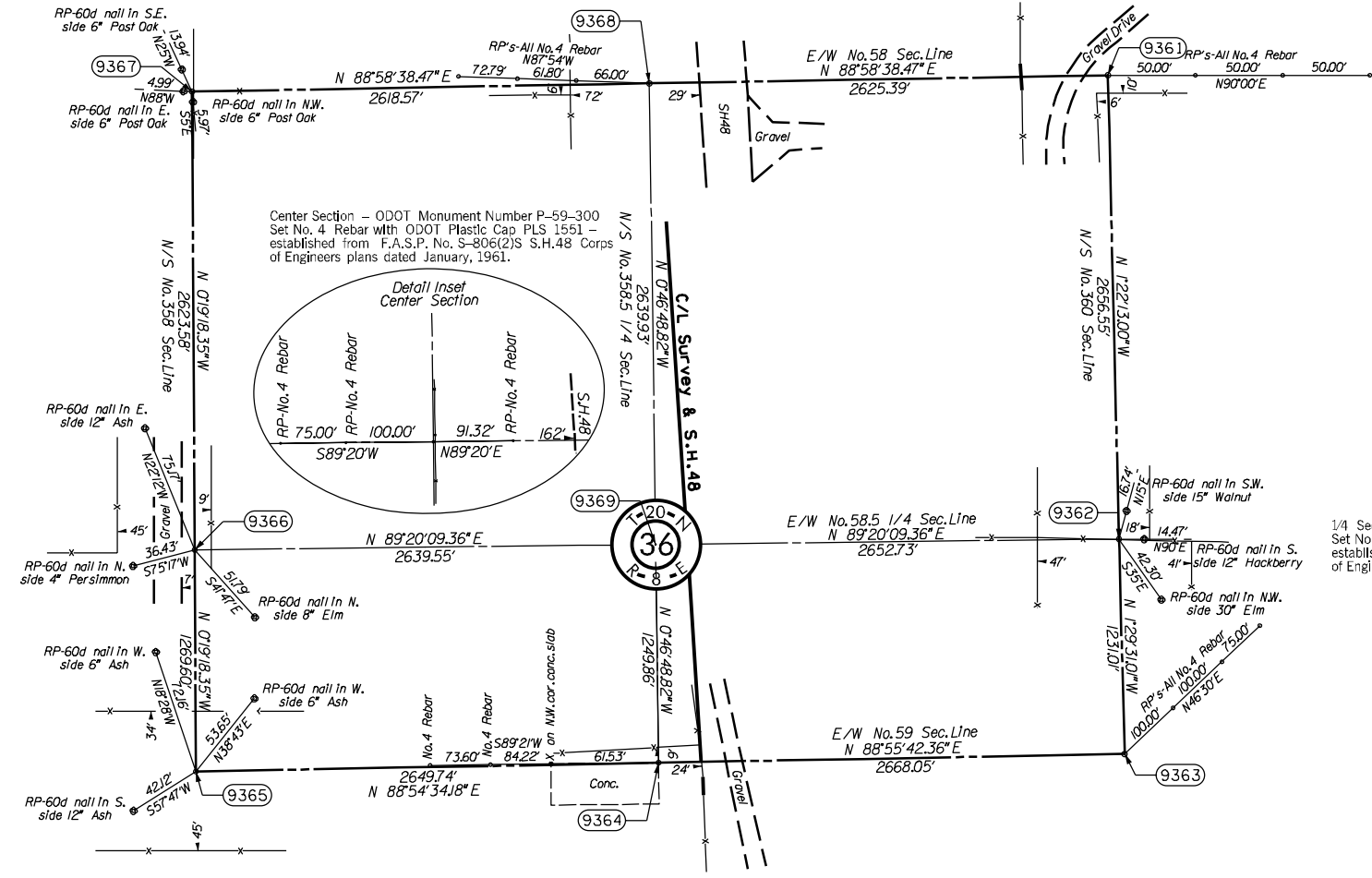
Section Corner – ODOT Monument Number P-59-296  
Original Stone found and used this survey.

1/4 Section Corner – ODOT Monument Number P-59-297  
Set No. 4 Rebar with ODOT Plastic Cap PLS 1551 –  
established from F.A.S.P. No. S-806(2)S S.H.48 Corps  
of Engineers plans dated January, 1961.

Section Corner – ODOT Monument Number P-59-298  
Set No. 4 Rebar with ODOT Plastic Cap PLS 1551 –  
established from F.A.S.P. No. S-806(2)S S.H.48 Corps  
of Engineers plans dated January, 1961 – also found  
a Corps of Engineers Brass Cap 49.5' west & 8.1' south  
of corner established.

1/4 Section Corner – ODOT Monument Number P-59-299  
Set No. 4 Rebar with ODOT Plastic Cap PLS 1551  
computed at a point on line between corners 0.5 mile  
north & 0.5 mile south and by extending line from the  
east 1/4 section corner through the center section corner.

1/4 Section Corner – ODOT Monument Number P-59-301  
Set No. 4 Rebar with ODOT Plastic Cap PLS 1551 –  
established from F.A.S.P. No. S-806(2)S S.H.48 Corps  
of Engineers plans dated January, 1961.



SCALE:  
1" = 500'

NOTE: REFERENCE'S SHOWN ARE NOT TO SCALE.

PLS	DEA	OKLAHOMA DEPARTMENT OF TRANSPORTATION SURVEY DIVISION
DRAWN	DEA	
CHECKED		
APPROVED	LGW	
CREW	Tecumseh	
		<b>SURVEY DATA SHEET</b>
SWO 4994 (1)		PROJECT NO. 27925(04) SHEET NO. 59